

**EXPLODED  
VIEWS**

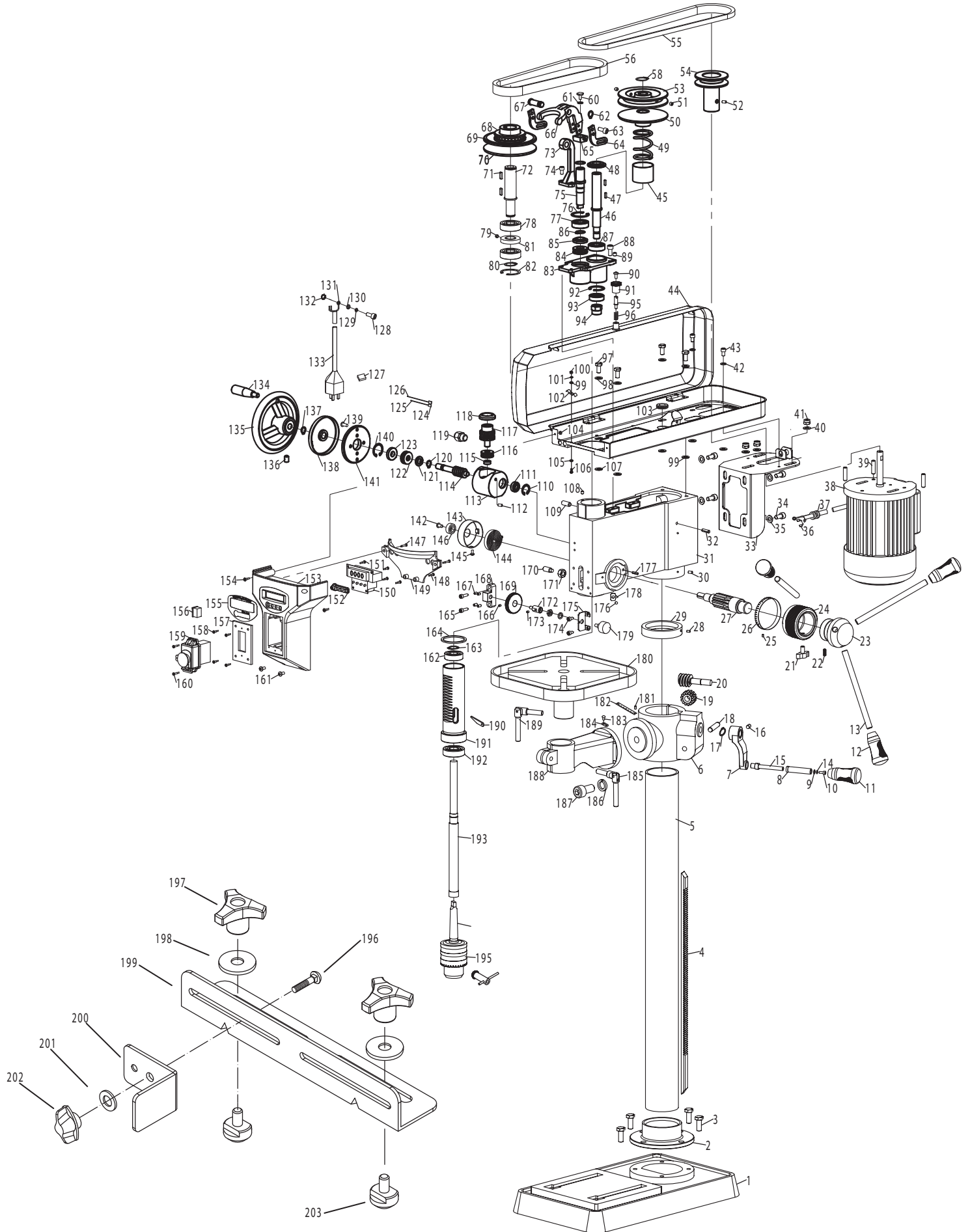
**20130VS**

**SERIAL NO.** \_\_\_\_\_

[www.steelcitytoolworks.com](http://www.steelcitytoolworks.com)

VER. 10.13

# ASSEMBLY DIAGRAM



# PARTS LIST

No.	Description	Qty.
1	Base	1
2	Flange	1
3	Socket Head Screw M10X20	4
4	Rack 505	1
5	Column $\Phi$ 72X750	1
6	Bracket	1
7	Crank Handle	1
8	Handle Sleeve	1
9	Flat Washer	1
10	Pan Head Screw M4X8	1
11	Grip knob black	1
12	Grip knob blue	3
13	Handle Bar	3
14	Locking Washer 4	1
15	Crank Shaft	1
16	Socket Set Screw M8X10	1
17	Retaining Ring 14	1
18	Shaft for pinion gear	1
19	Pinion Gear	1
20	Worm Gear	1
21	Wing Bolt	1
22	Spring Pin 6X20	1
23	Handle Seat/support	1
24	Depth lock	1
25	Rivet 2.5X6	1
26	Depth Scale	1
27	Feed Shaft	1
28	Socket Set Screw M6X10	1
29	Collar	1
30	Socket Set Screw M8X12	2
31	Headstock	1
32	Spring Pin 6X20	2
33	Motor Mount Plate	1
34	Socket Head Screw M8X16	4
35	Flat Washer 8	4
36	Grommet	2
37	Strain Relief	1
38	Motor	1
39	Socket Set Screws M8X30	1
40	Flat Washer 8	3
41	Hexagon locking nut M8	3
42	Flat Washer 6	2
43	Socket Set Screw M6X6	2
44	Pulley cover	1
45	speed change shaft	1
46	Spring cover	1
47	Key A5X15	2
48	Spring seat	1
49	speed change spring	1
50	speed change driving pulley	1
51	Socket Set Screws M5X5	2
52	Socket Set Screws M8X10	1
53	speed change fixing pulley	1
54	motor pulley	1

No.	Description	Qty.
55	Belt A600	1
56	Belt 15X425	1
58	Retaining Ring	1
59	Pan Head Screw M5X10	1
60	Washer	1
61	Washer	1
62	Retaining Ring 10	1
63	Socket Head Screw M5X8	4
64	Fixed plate	2
65	Nut	1
66	Adjusting bar	1
67	Adjusting shaft	1
68	Bearing 51108	1
69	Spindle driving pulley	1
70	Spindle fixing pulley	1
71	Key A5X15	1
72	Spindle relief	1
73	Speed change board	1
74	Socket Head Screw M5X12	2
75	speed change driver shaft	1
76	Retaining Ring $\Phi$ 32	1
77	Bearing 6002	1
78	Bearing 6203	2
79	Magnetic Head $\Phi$ 17	1
80	Retaining Ring	1
81	Inspect Speed Dish	1
82	Retaining Ring $\Phi$ 40	1
83	Speed change board	1
84	Bearing 51102	1
85	Bearing spacer	1
86	Retaining Ring $\Phi$ 15	1
87	Bearing 6002	1
88	Socket Set Screw M5X16	4
89	Socket Set Screw M5X8	2
90	Pan Head Screw M5X10	1
91	Pulley knob	1
92	Retaining Ring $\Phi$ 28	1
93	Bearing 6001	1
94	Locknut M12	1
95	Knob thread rod	1
96	Knob spring	1
97	Pan Head Screw M6X8	4
98	Flat Washer $\Phi$ 6	4
99	Flat Washer 5	2
100	Hexagon nut M5	2
101	Flat Washer	2
102	Line cord clamp	2
103	Grommet	1
104	Hex Nut M4	2
105	Flat Washer 5	2
106	Pan Head Screw M5X20	2
107	Rubber washer	6
108	Socket Set Screw M4X8	1
109	Speed Sensor	1

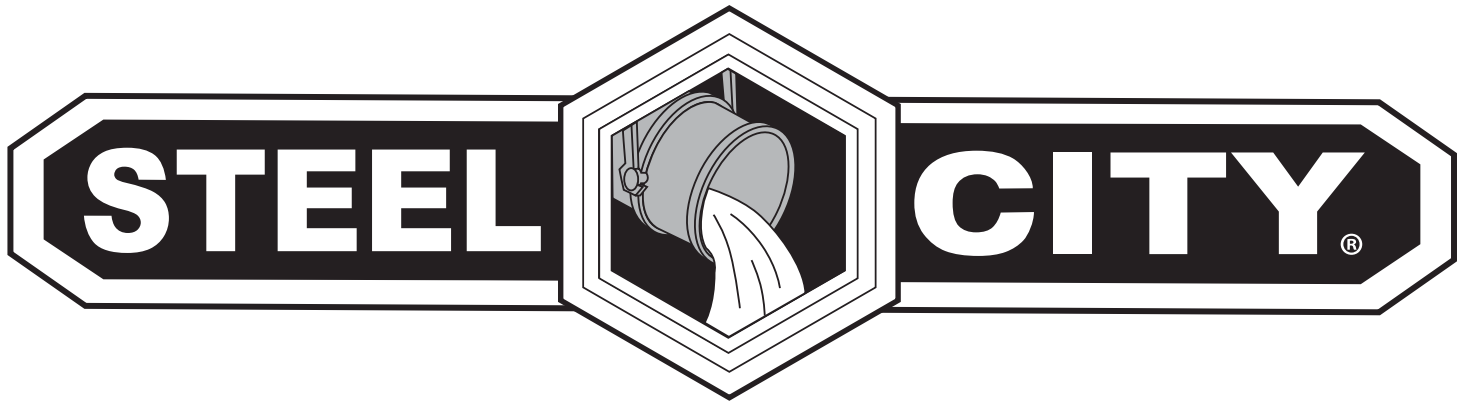
# PARTS LIST

No.	Description	Qty.
110	Retaining Ring $\Phi$ 19	1
111	Bearing 619-8	1
112	Socket set screw M5X8	1
113	Speed change support	1
114	Worm	1
115	Sliding bearing B	1
116	Bearing 51100	1
117	Worm Gear	1
118	Sliding bearing A	1
119	Strain Relief	1
120	Retaining Ring $\Phi$ 10	1
121	Small bearing spacer	1
122	Bearing 51100	1
123	Sliding bearing E	1
124	Terminal	2
125	Single wire	1
126	Single wire	1
127	Twin wire	2
128	Pan Head Screw M5X10	1
129	lock washer	1
130	Flat Washer	1
131	Ground Terminal	1
132	Serrated Washer	1
133	line cord	1
134	Handle assembly	1
135	Speed change wheel	1
136	Socket set screw M8X10	1
137	Retaining Ring $\Phi$ 10	1
138	Handle seat cover	1
139	Socket set screw M5X12	4
140	Retaining Ring $\Phi$ 40	1
141	Fixing plate	1
142	Socket set screw M6X10	1
143	Spring seat	1
144	Spring	1
145	Pan Head Screw M4X8	1
146	Nut	1
147	Pan Head Screw ST2.9X9.5	2
148	Pan Head Screw ST2.9X9.5	2
149	Cover board	1
150	Integrated circuit plate	1
151	Pan Head Screw ST2.9X9.5	4
152	Function touch knob	1
153	Switch box	1
154	Pan Head Screw M4X12	2
155	Window scale	1
156	Switch for Led light	1
157	Switch plate	1
158	Pan Head Screw ST2.9X9.5	2
159	Switch	1
160	Pan Head Screw ST2.9X9.5	2
161	Pan Head Screw M4X12	2
162	Bearing 6201	1
163	Retaining Ring $\Phi$ 12	1

No.	Description	Qty.
164	Rubber Bumper $\Phi$ 39X $\Phi$ 50X2	1
165	Socket Head Screw M5X16	2
166	Socket Set Screw M4X5	1
167	Socket Set Screw M4X8	4
168	Taximeter base	1
169	Gear	1
170	Slotted Set Screw M8X25	1
171	Nut M8	1
172	Shaft	1
173	Socket Head Screw M4X5	1
174	Pan Head Screw M5X10	2
175	Sensor Seat	1
176	Rivet 2.5X6	1
177	Stop Pin M6X5X14	1
178	Pointer	1
179	Sensor	1
180	Working Table	1
181	Rivet 2.5X6	2
182	Angle Scale	1
183	Rivet 2.5X6	2
184	Scale	1
185	Locking Handle M10X35	1
186	Lock Washer 16	1
187	Hex Head Bolt M16X30	1
188	Bracket	1
189	Locking Handle M12X50	1
190	Wedge	1
191	Quill	1
192	Bearing 6204	1
193	Spindle	1
194	Tapered spindle tip	1
195	Chuck with key JT3	1
196	Bolt M6X12	1
197	8mm flat washer	2
198	Handle knob	2
199	Parallel fence	1
200	Vertical fence	1
201	6mm flat washer	1
202	Locking handle knob	1
203	Screw	2







# **STEEL CITY TOOL WORKS**

**[www.steelcitytoolworks.com](http://www.steelcitytoolworks.com)**

**1-877-SC4-TOOL**  
**(1-877-724-8665)**

---

---

# NOTES

[www.steelcitytoolworks.com](http://www.steelcitytoolworks.com)

Steel City Tool Works, LLC Bolingbrook, IL. USA 60440

Tech Service: 1.877.724.8665