

**EXPLODED
VIEWS**

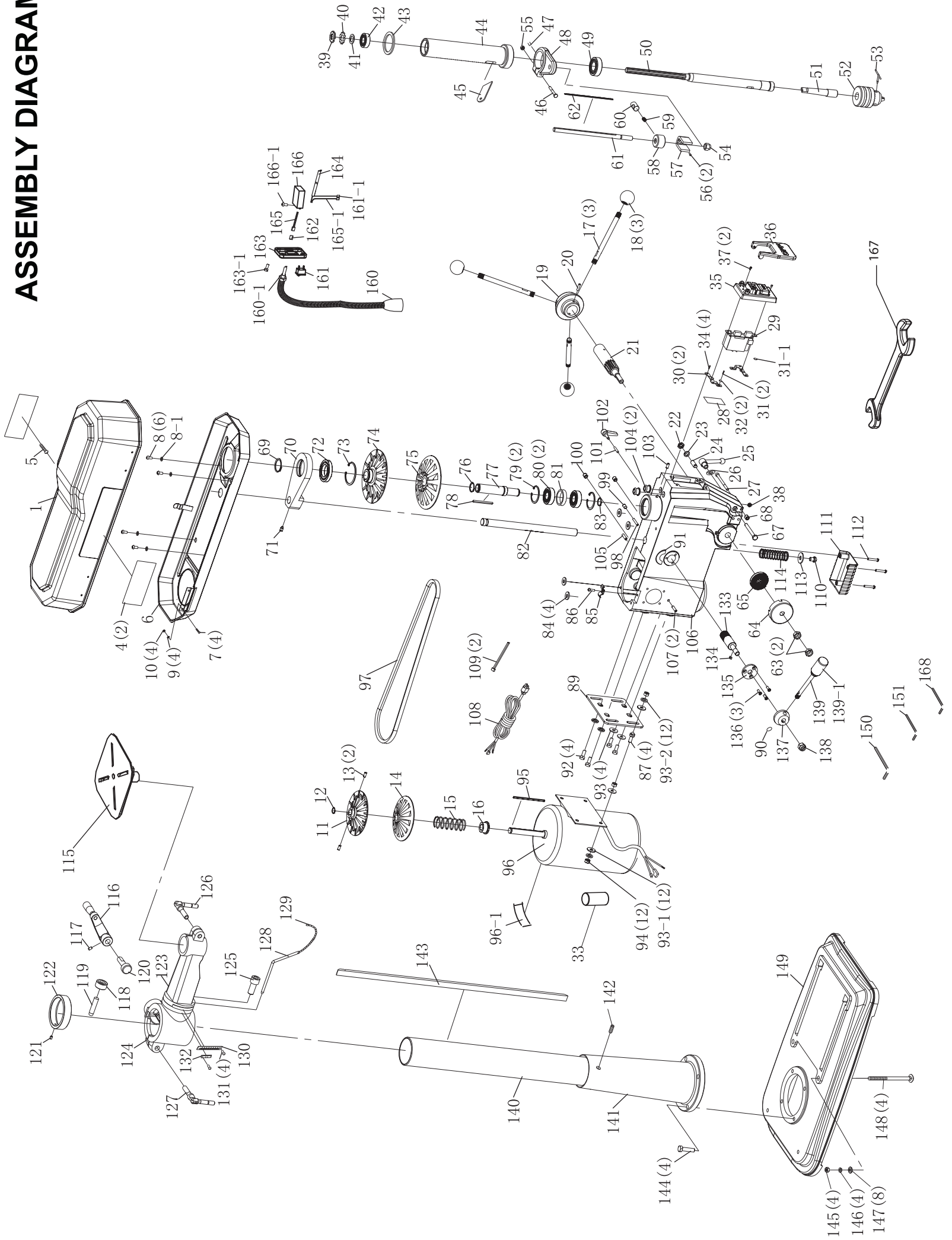
20530

SERIAL NO. _____

www.steelcitytoolworks.com

VER. 02.5.14

ASSEMBLY DIAGRAM



Part List

No.	Description	Qty.
1	UPPER PULLEY COVER + 35 mm	1
4	NAME PLATE	2
5	ST4.2X9.5 PAN HD TAP SCR	1
6	LOWER PULLEY COVER + 35 mm	1
7	M4x10 mm CROSS HD SCR	4
8	M6x12 mm CROSS HD SCREW	6
8-1	6 mm FLAT WASHER	6
9	Ø4 EXT TOOTH WASHER	4
10	M4 HEX NUT	4
11	MOTOR FIXED PULLEY	1
12	Ø16 RETAINING RING	1
13	M6x10 mm HEX SOC SET SCR	2
14	MOTOR PULLEY	1
15	MOTOR SPRING	1
16	SPRING SEAT	1
16-1	M6x6 mm BOLT	1
17	HANDLE BAR	3
18	HANDLE GRIP	3
19	HANDLE SEAT	1
20	Ø5x20 SPRING PIN	1
21	PINION SHAFT	1
22	M10 HEX NUT	1
23	Ø10 LOCK WASHER	1
24	SPECIAL SCREW	1
25	LOCK HANDLE	1
26	M8 FLAT WASHER	1
27	M6X80 mm HEX SOC HD SCR	1
28	INSULATOR PLATE	1
29	PUSH BUTTON SWITCH	1
30	SWITCH SUPPORT PLATE	2
30-1	CONNECT MARK	2
31	M5x10 mm PAN HD SCR	2
32	Ø5 EXT TOOTH WASHER	2
33	Capacitor 600 MFD 250VAC CD60	1
34	M5x10 mm PAN HD SCR	2
35	SWITCH COVER ASSEMBLY	1
36	SWITCH PADDLE	1
37	M4x20 mm BOLT	2
38	M6 HEX NUT	1
39	LOCK NUT	1
40	RING	1
41	M17.5 FLAT WASHER	1
42	BALL BEARING (6203-2RS)	1
43	RUBBER WASHER	1
44	QUILL * 52 mm	1
45	SHIFTER	1
46	M6x46 mm HEX HD SCR	1
47	M6x12 mm HEX SOC SET SCREW	1
48	STOP COLLAR * 52 mm	1
49	BALL BEARING (6205-2RS)	1
50	SPINDLE	1
51	ARBOR	1
52	CHUCK <JT3 Max =16 mm>	1
53	CHUCK KEY (black)	1
54	M12 LOCK NUT	1
55	M6 HEX NUT	1
56	M6x12mm FLAT HD SCR	2
57	MOUNTING BRACKET	1
58	STOP NUT ASSEMBLY	1
59	SPRING	1
60	QUICK RELEASE NUT	1
61	DEPTH ROD	1
62	DEPTH SCALE	1
63	M12 HEX NUT	2
64	SPRING CAP	1
65	COIL SPRING	1
67	M8x70 mm HEX HD SCR	1
68	NUT	1
69	Ø40 RETAINING RING	1
70	LINK PLATE	1
71	M8x12 mm HEX SOC SET SCR	2
72	BALL BEARING (16008)	1
73	Ø68 RETAINING RING	6
74	SPINDLE PULLEY	1
75	SPINDLE FIXED PULLEY	1
76	Ø24 RETAINING RING	1
77	SLEEVE	1
78	4x72 mm KEY	1
79	Ø52 RETAINING KEY * 52 mm	2
80	BALL BEARING (6304)	2
81	SPACER	1
82	SHAFT RACK	1
83	Ø20 RETAINING RING	1
84	FORM WASHER	6
85	CLAMP	1
86	M5X12 mm CROSS HD SCR	1
87	SPECIAL SCREW	4

145	M8 HEX NUT	4
146	Ø8 LOCK WASHER	4
147	Ø8 FLAT WASHER	8
148	M8x125mm HEX HD SCR	4
149	BASE	1
150	3 mm HEX WRENCH	1
151	5 mm HEX WRENCH	1
160	LED LIGHT	1
160-1	M10 HEX NUT	1
161	LED SWITCH	1
161-1	TERMINAL	2
162	PATCH PLUG	1
163	LIGHT SEAT	1
163-1	M5X10mm HEX SOC HD SCR	4
164	HEADSTOCK	1
165	WIRE	2
165-1	WIRE	1
166	LIGHT DRIVE	1
166-1	M4x10 mm PAN HD SCR	1
167	OPEN-END WRENCH 8x10 mm	1
168	4mm HEX WRENCH	1

116	HANDLE ASSEMBLY	1
117	M6x10mm HEX SOC SET SCR	1
118	PINION SHAFT	1
119	SHAFT	1
120	WORM GEAR	1
121	M6x8 mm HEX SOC SET SCR	1
122	RING	1
123	TABLE SUPPORT	1
124	BRACKET	1
125	M16x30 mm BOLT	1
126	LOCK HANDLE ASSEMBLY M10X35 mm	1
127	LOCK HANDLE ASSEMBLY M12X50 mm	1
128	LOCK PIN *6 mm	1
129	CHAIN	1
130	SCALE	1
131	2x5 mm RIVET	7
132	INDICATOR PLATE	1
133	PINION SHAFT	1
134	4x10 KEY	1
135	LIMIT PLATE	1
136	M5x16 mm PAN HD SCR	3
137	VARIABLE SPEED HANDLE SUPPORT	1
138	M12 NYLON NUT	1
139	HANDLE	1
139-1	HANDLE GRIP	1
140	COLUMN	1
141	COLUMN SUPPORT	1
142	M10x12 mm HEX HD SET SCR	2
143	RACK	1
144	M10x40 mm HEX HD SCR	4

89	MOTOR BRACKET	1
90	FINGER	1
91	INDICATOR PLATE	1
92	M8x20 mm HEX HD SCR	4
93	Ø8 BIG FLAT WASHER	4
93-1	Ø8 FLAT WASHER	12
93-2	Ø8 LOCK WASHER	8
94	M8 HEX NUT	12
95	4x98 mm KEY	1
96	MOTOR	1
96-1	MOTOR LABEL	1
97	BELT L=1130 mm	1
98	5x35 mm PIN	1
99	M8x15 mm HEX SOC SET SCR	1
100	M10x15 mm HEX SOC SET SCR	1
101	4x28 mm PIN	1
102	HANDLE Ø4X4 mm	1
103	M6x16 mm HEX SOC SET SCR	1
104	GROMMET	2
105	M10x20 mm HEX SOC SET SCR	1
106	HEADSTOCK	1
107	Ø6X24mm SPRING PIN	2
108	POWER CORD	1
109	WIRE TIE	1
110	M10x16 mm CROSS HD SCR	1
111	COVER	1
112	M5x35 mm PAN HD SCR	3
113	M10 FLAT WASHER	1
114	ADJUST SPRING	1
115	TABLE	1



STEEL CITY TOOL WORKS

www.steelcitytoolworks.com

1-877-SC4-TOOL
(1-877-724-8665)

NOTES

www.steelcitytoolworks.com

Steel City Tool Works, LLC Bolingbrook, IL. USA 60440

Tech Service: 1.877.724.8665