



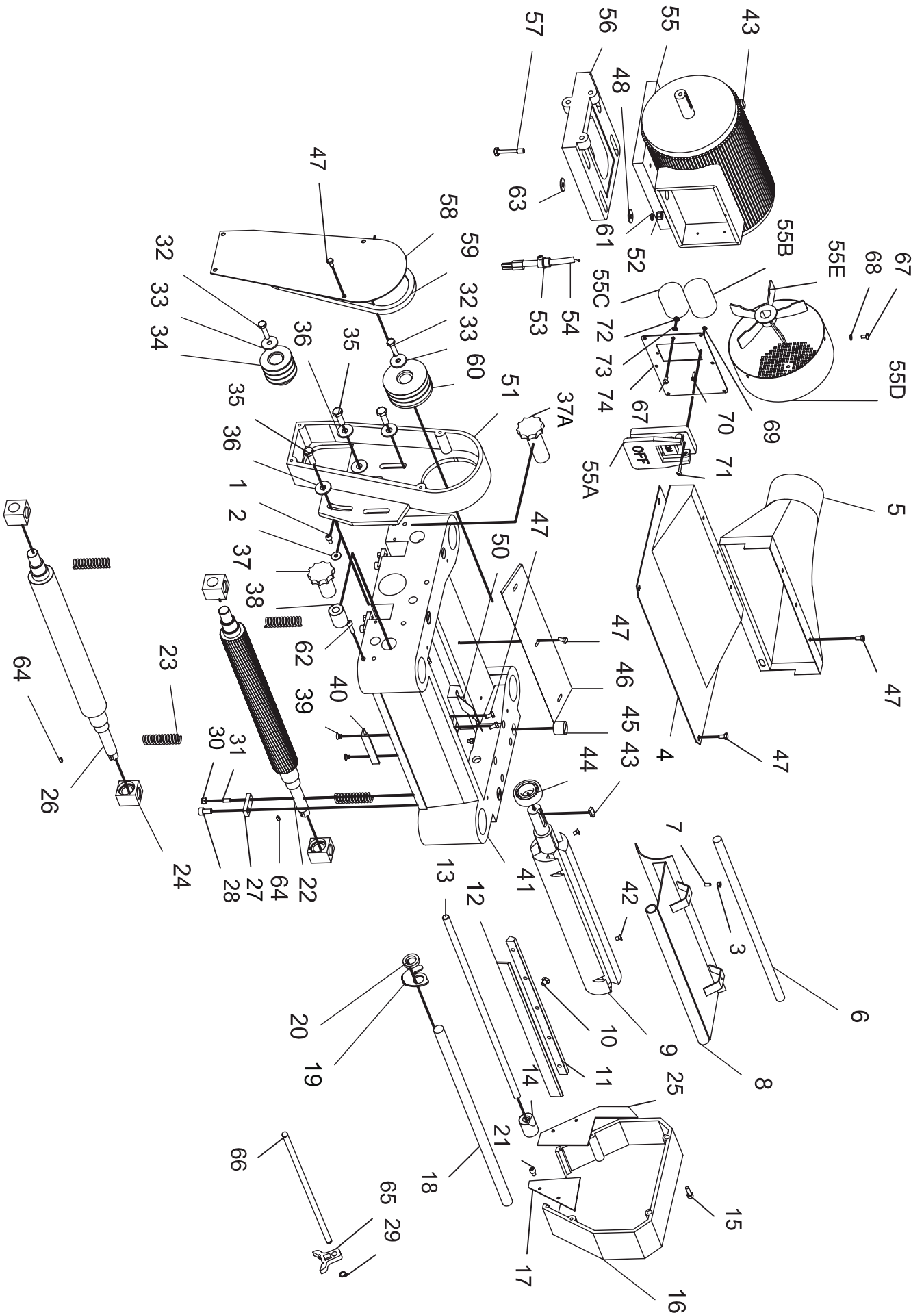
EXPLODED VIEWS

40255

SERIAL NO. _____

www.steelcitytoolworks.com

VER. 12.05.13



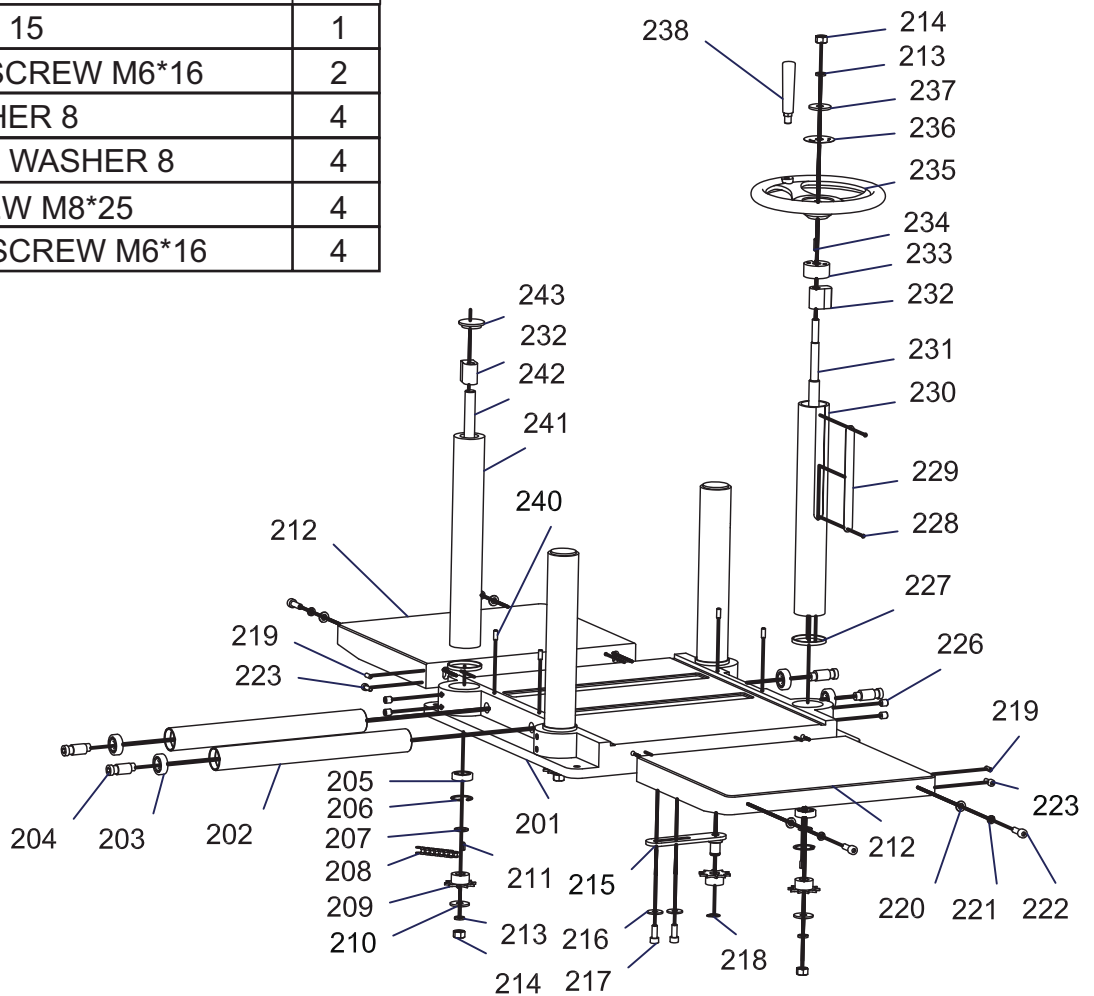
MACHINE HEAD PART LIST

PART	DESCRIPTION	QTY	PART	DESCRIPTION	QTY
1	CAP SCREW M6*12	4	41	MACHINE HEAD	1
2	WASHER	4	42	CAP SCREW M5X10 (straight knife only)	6
3	NUT M5	2	43	KEY 8*35	2
4	UPPER COVER	1	44	BALL BEARING 6205	1
5	DUST HOOD	1	45	SPECIAL SCREW	4
6	MIDDLE SHAFT	1	46	DEFLECTOR PLATE	1
7	SET SCREW M5*16	2	47	FLANGE BOLT M6*12	20
8	CHIP BREAKER	1	48	FLAT WASHER 8	7
9	CUTTERHEAD	1	49	SCREW M8*12	3
10	BOLT M8*10	15	50	SPRING	3
11	KNIFE LOCK BAR	3	51	PULLEY GUARD	1
12	BLADE	3	52	NUT M8	4
13	LOCK BOLT	2	53	STRAIN RELIEF	1
14	BUSHING	2	54	POWER CORD	1
15	SCREW M6*20	3	55	MOTOR	1
16	COVER	1	55A	SWITCH	1
17	LEFT PLATE	1	55B	START CAP	1
18	SHAFT	1	55C	RUN CAP	1
19	ANT-KICKBACK FINGER	45	55D	REAR COVER	1
20	COLLAR	47	55E	FAN	1
21	CAP SCREW M6*10	4	56	MOTOR PLATE	1
22	INFEED ROLLER	1	57	BOLT M8*50	4
23	SPRING	4	58	PULLEY COVER	1
24	ROLLER BUSHING	4	59	BELT O 670	3
25	RIGHT PLATE	1	60	MOTOR PULLEY 84 mm	1
26	OUTFEED ROLLER	1	61	LOCK WASHER ϕ 8	4
27	PLATE	4	62	SET SCREW M6*20	8
28	BOLT M8*20	4	63	FENDER WASHER 8	4
29	SANP 10	2	64	KEY 5*15	2
30	NUT M6	4	65	KNIFE GAUGE	2
31	SET SCREW M6*16	4	66	BAR	1
32	SCREW M8*20	2	67	PHILLIPS HEAD SCREW M5*10	4
33	FENDER WASHER 8	2			
34	CUTTERHEAD PULLEY	1	68	FLA TWASHER 5	3
35	HEX BOLT M10*30	5	69	NUT M4	2
36	FENDER WASHER 10	5	70	TAP SCREW ST3.5*10	6
37	SHORT HANDLE	1	71	PHILLIPS HEAD SCREW M4*20	2
37A	LONG HANDLE	1			
38	BUSHING	2	72	NUT M5	1
39	FLAT HEAD SCREW M5*10	2	73	SERRATED SPACER 5	1
40	LIMITER PLATE	1	74	SWITCH PLATE	1

NOTE: #39-40 Helical 40255H only

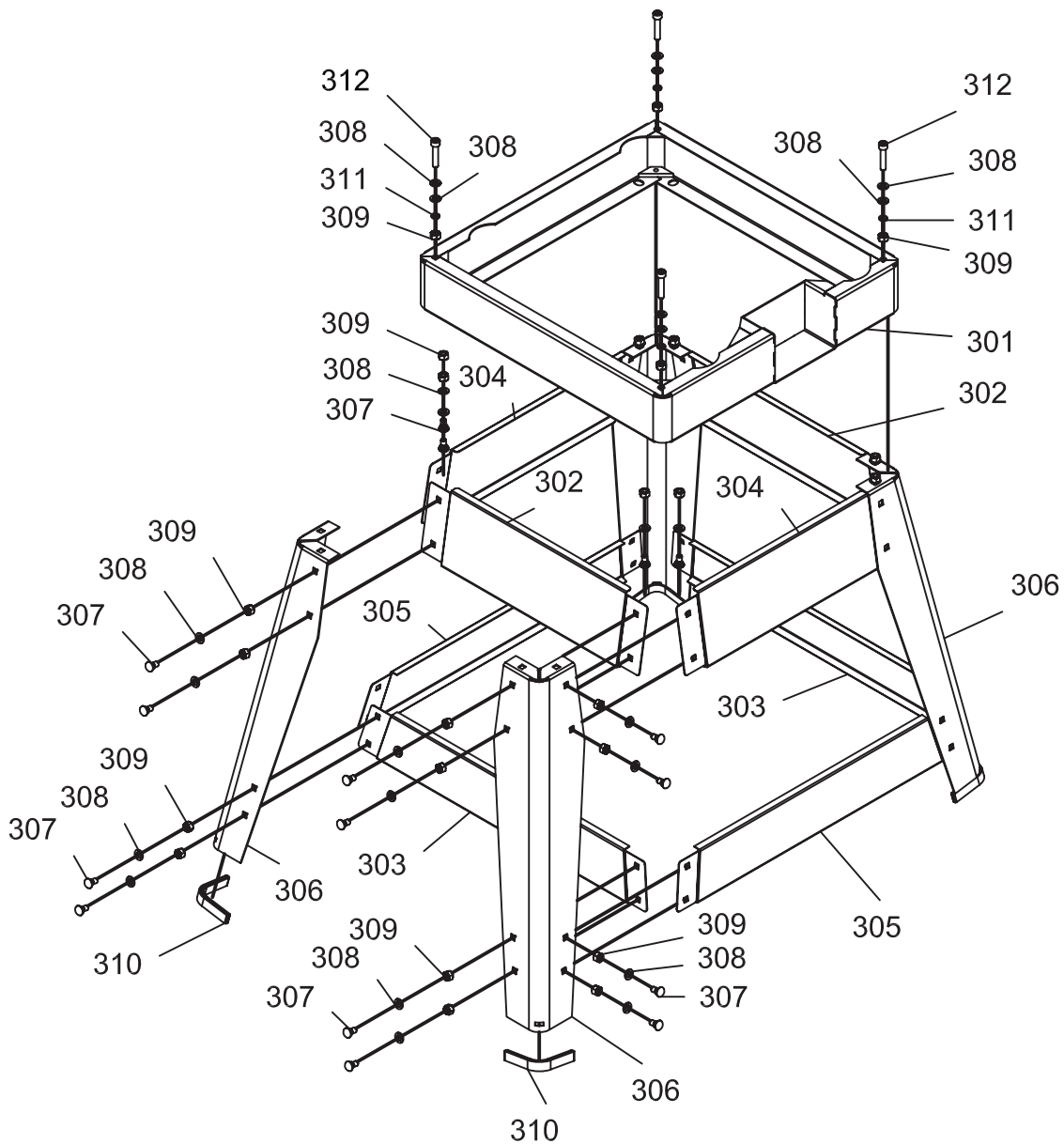
TABLE

PART	NAME	QTY	PART	NAME	QTY
201	TABLE	1	226	SET SCREW M10*12	8
202	ROLLER	2	227	COLUMN SPACER	4
503	BALLBEARING 6201	8	228	SCREW M3*6	2
204	ECCENTRIC STUD	4	229	SCALE	1
205	BALL BEARING 6002	4	230	COLUMN	1
206	SNAP 32	4	231	LEAD SCREW	1
207	GEAR WASHER	10	232	LEAD NUT	4
208	CHAIN	1	233	BUSHING	1
209	SPROCKET	5	234	KEY 4*20	1
210	FLAT WASHER 10	4	235	HANDLE WHEEL	1
211	KEY 5*12	4	236	DIRECTIONAL PLATE	1
212	CASE IRON EXTENTION TABLE	2	238	HANDLE	1
			240	SET SCREW M6*16	4
213	LOCK WASHER 10	5	241	COLUMN	3
214	NUT M10	6	242	LEAD SCREW	3
215	SUPPORT PLATE	1	243	COLUMN CAP	3
216	FLAT WASHER 8	2			
217	SCREW M8*20	2			
218	SNAP 15	1			
219	SET SCREW M6*16	2			
220	WASHER 8	4			
221	LOCK WASHER 8	4			
222	SCREW M8*25	4			
223	CAP SCREW M6*16	4			



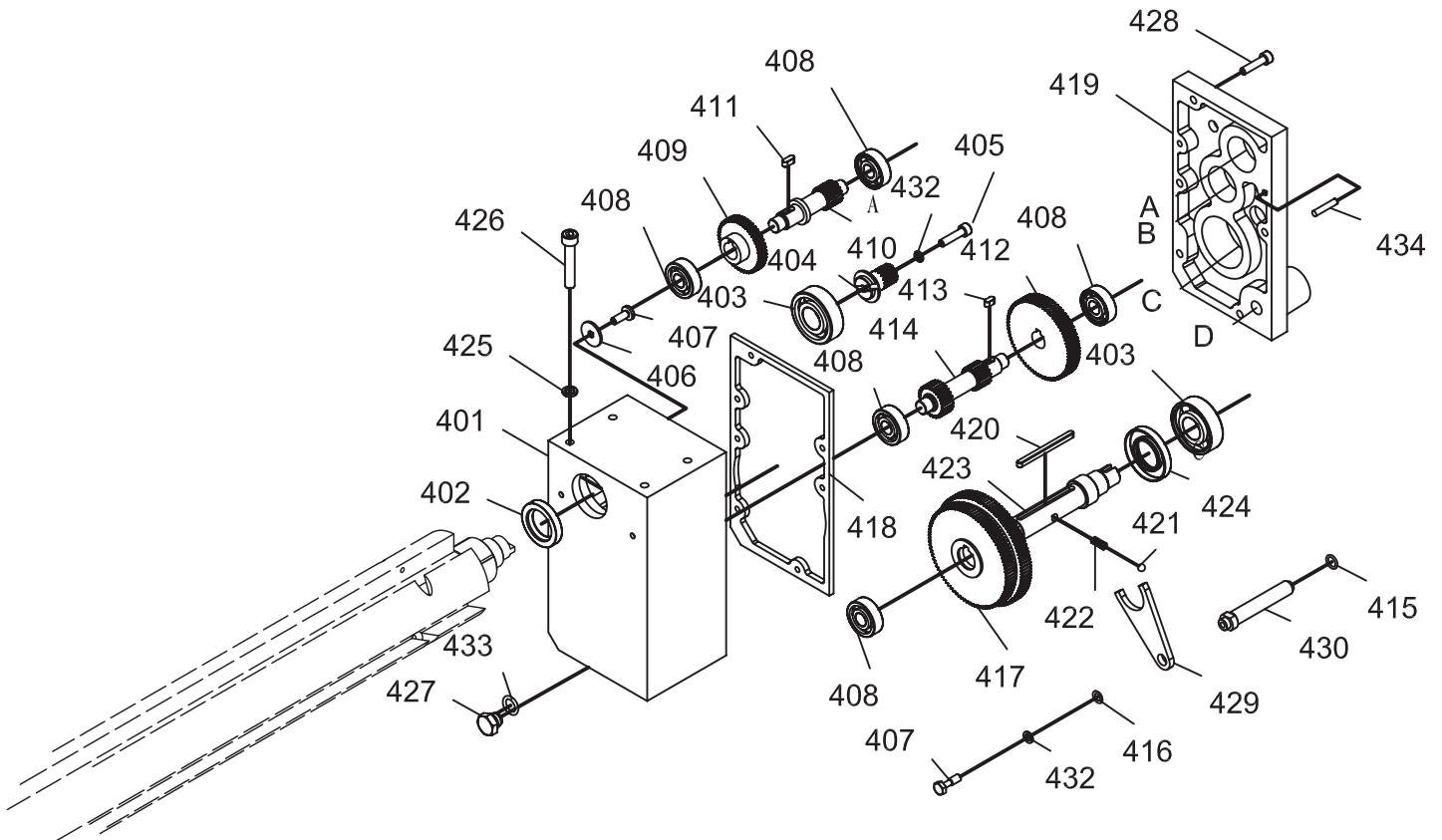
BASE

PART	DESCRIPTION	QTY
301	BASE	1
302	SHORT UPPER BRACE(C)	2
303	SHORT LOWER BRACE(D)	2
304	LONG UPPER BRACE(A)	2
305	LONG LOWER BRACE(B)	2
306	LEG	4
307	CARRIAGE BOLT M8*16	40
308	FLAT WASHER $\phi 8$	48
309	HEX NUT M8	44
310	FOOT	4
311	LOCK WASHER $\phi 8$	4
312	CAP SCREW M8*40	4



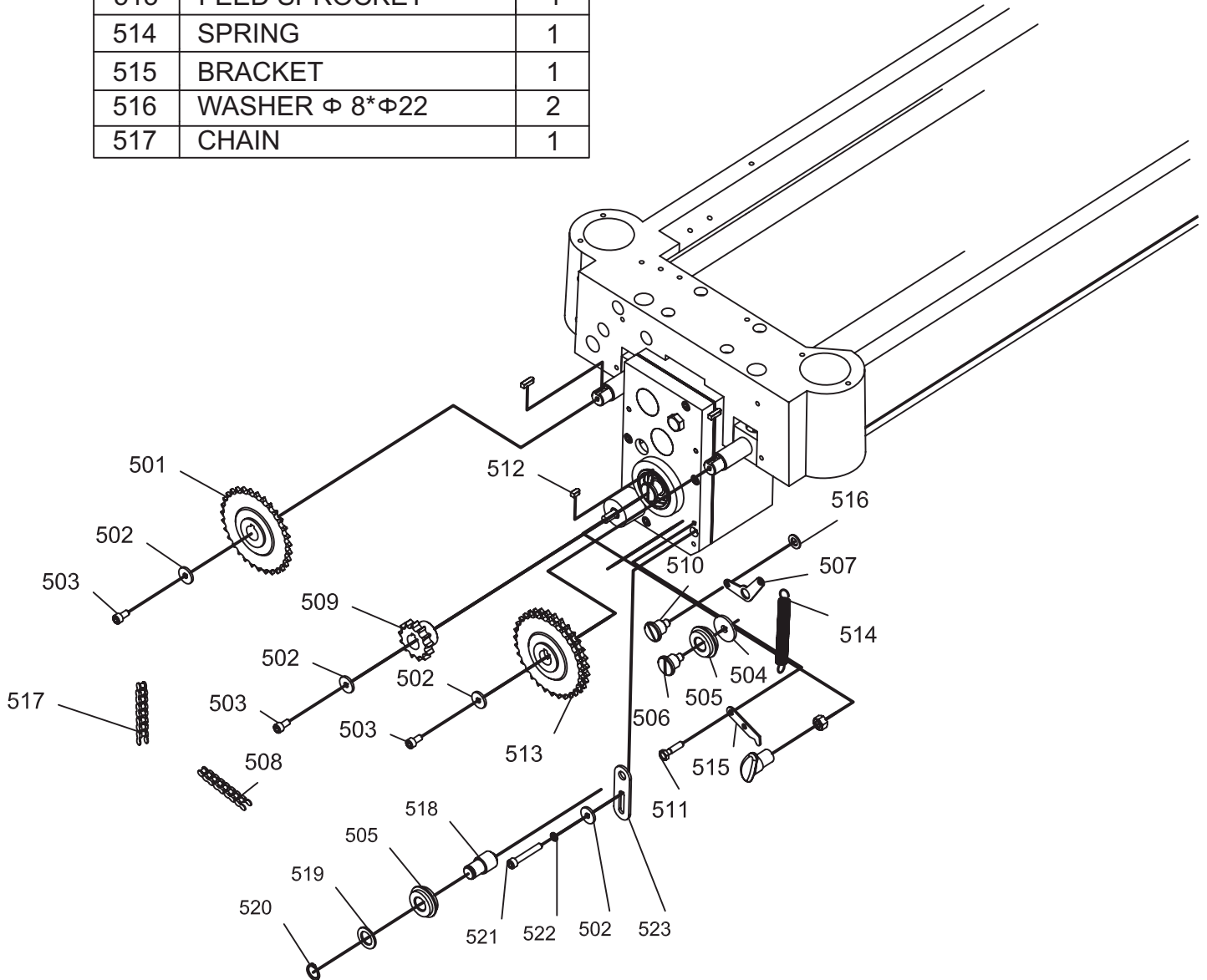
BOX

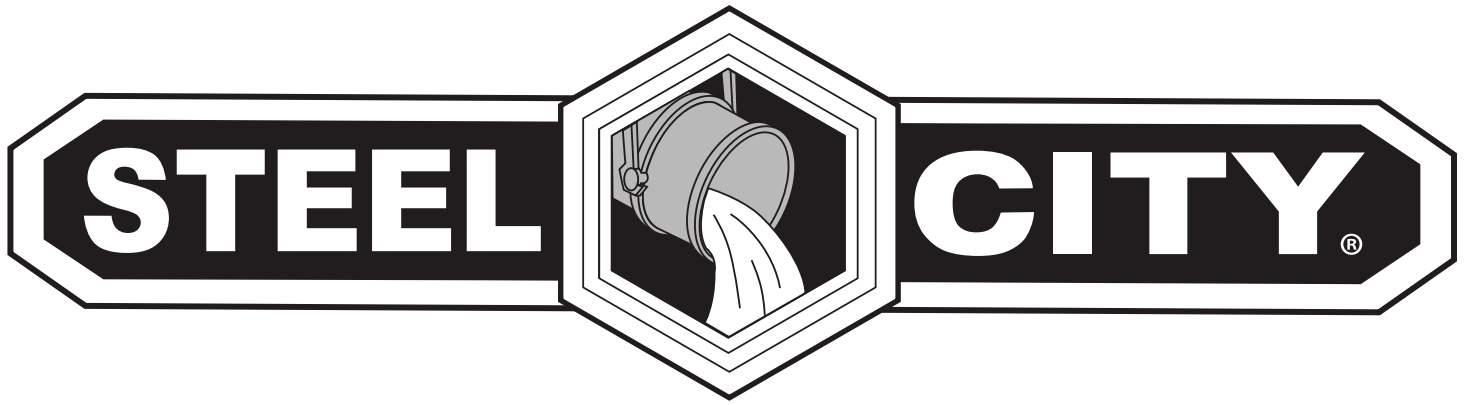
PART	NAME	QTY	PART	NAME	QTY
401	GEAR BOX	1	418	GASKET	1
402	OIL SEAL 25*40*7	1	419	GEAR CASE	1
403	BALL BEARING 6204	2	420	KEY A5*40	1
404	GEAR	1	421	STEEL BALL $\Phi 6$	1
405	CAP SCREW M6*25(LEFT)	1	422	TENSION SPRING	1
406	FLAT WASHER 6	1	423	SHAFT	1
407	FLANGE BOLT M6*12	2	424	OIL SEAL 25*47*7	1
408	BEARING 6201	5	425	LOCK WASHER $\Phi 8$	4
409	GEAR	1	426	CAP SCREW M8*30	4
410	GEAR AND SHAFT	1	427	HEX BOLT M12*1.25*16	2
411	KEY A5*12	1	428	CAP SCREW M6*25	4
412	GEAR	1	429	SHIFTER	1
413	KEY A5*10	1	430	SHIFTING SHAFT HANDLE	1
414	GEAR 2-SPEED	1	432	LOCK WASHER $\Phi 6$	2
415	OIL SEAL 11.8*2.65	1	433	OIL SEAL 9*1.8	2
416	FLAT WASHER 6	1	434	ROLL PIN 5*25	2
417	DOUBLE GEAR	1			



GEARING

PART	NAME	QTY	PART	NAME	QTY
501	SPROCKET	1	518	SHAFT	1
502	WASHER	4	519	WASHER	1
503	CAP SCREW M6X16	3	520	EXT RET RING 15	1
504	FLAT WASHER $\Phi 10$	1	521	CAP SCREW M6*40	1
505	CHAIN TENSIONER	2	522	LOCK WASHER 6	1
506	SHAFT	1	523	BRACKET	1
507	BRACKET	1			
508	CHAIN	1			
509	SPROCKET	1			
510	SPECIAL BOLT	1			
511	SCREW M6*10	2			
512	KEY 5X15	1			
513	FEED SPROCKET	1			
514	SPRING	1			
515	BRACKET	1			
516	WASHER $\Phi 8*\Phi 22$	2			
517	CHAIN	1			





STEEL CITY TOOL WORKS

www.steelcitytoolworks.com

1-877-SC4-TOOL
(1-877-724-8665)

NOTES

www.steelcitytoolworks.com

Steel City Tool Works, LLC Bolingbrook, IL. USA 60440

Tech Service: 1.877.724.8665