



**EXPLODED
VIEWS**

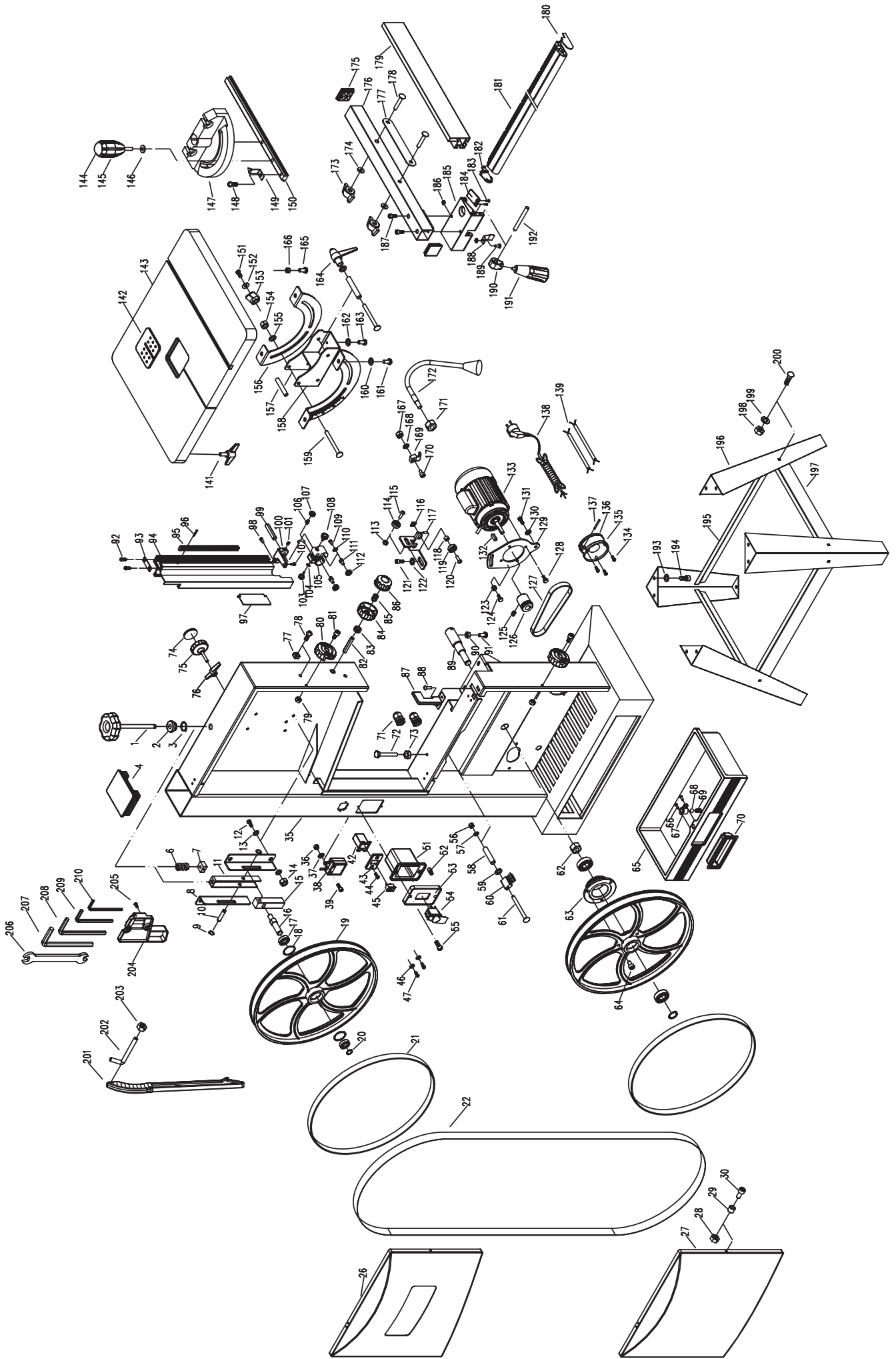
50110

SERIAL NO. _____

www.steelcitytoolworks.com

VER. 11.19.13

ASSEMBLY DIAGRAM



PARTS LIST

Part no.	Description	Quantity
1	Tension Knob	1
2	Spacer	1
3	3AMI-15 Retaining Ring	1
4	Body Plug	1
6	Tension Spring	1
7	Tension Nut	1
8	Guide Rail Plate	2
9	3AMI-8 Retaining Ring	2
10	Adjusting Block Arbor	1
11	Pullblock	1
12	8 x 16mm Socket Set Screw	4
13	8mm Flat Washer	8
14	8mm Hex Nut	4
15	Adjusting Block	1
16	Upper Wheel Shaft	1
17	Ball Bearing	4
18	3BMI-26 Retaining Ring	4
19	Wheel	2
20	3AMI-10 Retaining Ring	2
21	Tire	2
22	Blade	1
26	Upper Wheel Cover	1
27	Lower Wheel Cover	1
28	6mm Locknut	2
29	Gasket	2
30	6 x 16mm Socket Head Screw	2
35	Body	1
36	4mm Cap Nut	1
37	4mm Flat Washer	1
38	LED Lamp Switch Driver	1
39	4 x 12mm Socket Head Screw	1
40	4.2 x 9.5mm Cross Head Screw	1
41	Cord Grip	1
42	LED Lamp Switch Box	1
43	LED Lamp Switch Plate	1
44	4 x 12mm Cross Head Screw	2
45	Switch	1
46	4mm Toothed Washer	2
47	4x8mm Cross Head Screw	2
51	Switch Box	1
52	Terminal Board (4 x 2)	1
53	Switch board	1
54	Switch	1
55	4 x 12mm Cross Head Screw	2
56	8mm Cap Nut	1
57	8mm Flat Washer	1

58	Brush Spacer	1
59	8mm Flat Washer	1
60	Brush	1
61	8 x 70mm Carriage Bolt	1
62	14mm Hex Nut	1
63	Spindle Pulley	1
64	5 x 10mm Socket Head Screw	3
65	Drawer	1
66	2.9 X 9.5mm Cross Head Screw	2
67	Steel Ball Fixing Sleeve	1
68	8mm Steel Ball	1
69	Steel Ball Spring	1
70	Drawer Handle	1
71	Strain Relief	2
72	Level Locating Rod	1
73	8mm Hex Nut	1
74	Handle Cover	1
75	Upper Wheel Adjusting Handle	1
76	Upper Wheel Position Fixing Handle	1
77	Guide Block	2
78	4 x 8mm Cross Head Screw	2
79	6mm Locknut	2
80	Handle	2
81	6 x 16mm Socket Head Screw	2
82	Shaft	1
83	Gear	1
84	Adjusting Handle	1
85	Spring	1
86	Locking Handle	1
87	Lower Blade Guard Plate	1
88	6 x 10mm Socket Head Screw	2
89	Lower Wheel Shaft	1
90	6mm Hex Nut	4
91	6 x 20mm Hex Bolt	4
92	4.8 x 13mm Cross Head Screw	2
93	Location Limited Plate	1
94	Blade Guard Cover	1
95	Rack	1
96	Spring Pin	2
97	Guard Plate	1
98	5 x 8mm Socket Cap Screw	1
99	Connecting Shaft	1
100	Connecting Block	1

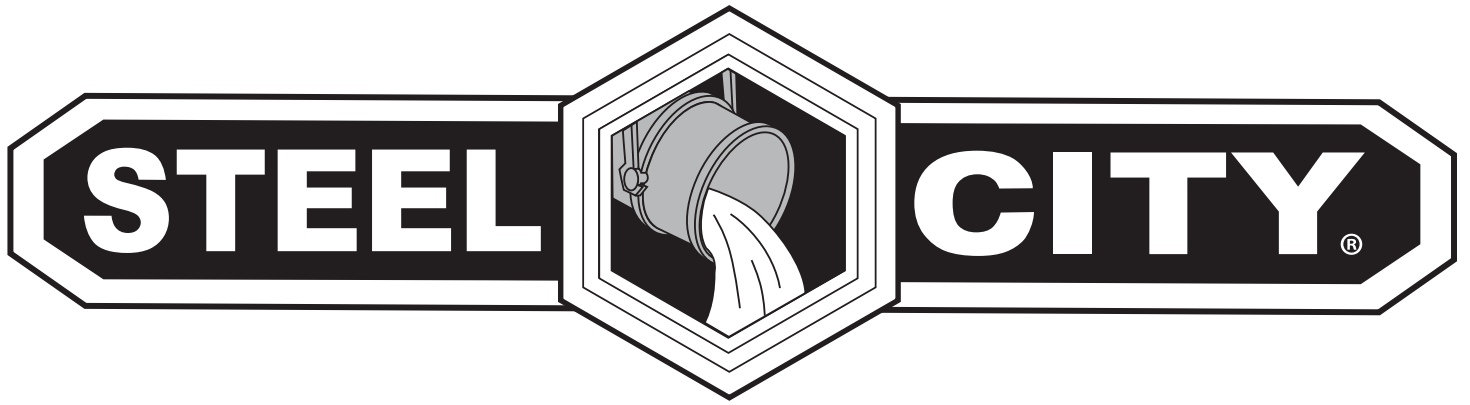
PARTS LIST

Part no.	Description	Quantity
101	6 x 8mm Socket Set Screw	1
102	4.8 x 13mm Cross Head Screw	1
103	Knob II	1
104	5mm Flat Washer	1
105	Guide Block	1
106	Bearing Pillar II	1
107	Bearing	1
108	Knob I	1
109	5 x 16mm Socket Head Screw	2
110	5mm Flat Washer	2
111	Bearing Pillar I	2
112	Bearing	2
113	6mm Hex Nut	1
114	Bearing	1
115	6 x 16mm Socket Head Screw	1
116	Square Nut	2
117	Lower Guide Block	1
118	Spacer Bushing	2
119	Bearing	2
120	6 x 16mm Socket Head Screw	2
121	6 x 10mm Socket Head Screw	2
122	6mm Flat Washer	2
123	6mm Hex Nut	2
124	6 x 16mm Socket Head Screw	2
125	6 x 8mm Socket Set Screws	1
126	Motor Pulley	1
127	Belt	1
128	6 x 10mm Hex Socket Screw	4
129	Motor Connecting Plate	1
130	8mm Washer	2
131	8 x 12mm Socket Head Screw	2
132	5 x 25mm Key	1
133	Motor	1
133A	Capacitor 350 VAC, 35uF	1
134	4.2 x 13mm Cross Head Screw	3
135	Dust Export	1
136	Dust Export Cover	1
137	3 x 22mm Pin	1
138	Line Cord	1
139	Line	2
141	Rail Knob	4
142	Insert	1
143	Working Table	1
144	Knob Cover	1
145	Knob	1
146	Plastic Washer	1

147	Miter Gauge Body	1
148	4 x 8mm Cross Head Screw	1
149	Pointer	1
150	Slide Bar	1
151	4 x 12mm Cross Head Screw	1
152	4mm Flat Washer	1
153	Pointer	1
154	8mm Locknut	1
155	8mm Washer	2
156	Angle Guide Plate / Trunnion	2
157	Spacer Sleeve	2
158	Rotary Seat / Trunnion Bracket	1
159	Screw	2
160	6mm Flat Washer	4
161	6 x 10mm Hex Screw	4
162	6mm Flat Washer	4
163	6 x 10mm Hex Screw	4
164	8mm Handle	1
165	6 x 25mm Hex Screw	1
166	6mm Hex Nut	1
167	5mm Cap Nut	1
168	5mm Flat Washer	1
169	Cord Grip / Retainer	1
170	5 x 12mm Socket Head Screw	1
171	10mm Hex Nut	1
172	LED Lamp	1
173	Turn-knob	2
174	6mm Flat Washer	2
175	Plug / Endcap	2
176	Running Rule Square Pipe / Fence	1
177	Wafer / Spacer	1
178	6 x 50 Head Square Bolt / Carriage	2
179	Running Rule / Resaw Fence	1
180	Plug I Rail End Cap Right	1
181	Running Rule Guide Rail	1
182	Plug II Rail End Cap Left	1
183	2.9 x 9.5mm Cross Head Screw	2
184	Pointer / Cursor	1
185	Running Rule Seat / Fence Body	1
186	5mm Square Nut	3
187	5 x 10mm Socket Head Screw	2
188	Spring Leaf Clamp	1
189	5 x 8mm Cross Head Screw	1
190	Lock Block	1
191	Locking Handle	1

PARTS LIST

Part no.	Description	Quantity
192	Shaft	1
193	6mm Flat Washer	8
194	6 x 12mm Socket Head Screw	8
195	Support Plate / Long Brace	2
196	Stand / Legs	4
197	Support Plate / Short Brace	2
198	6mm Hex Nut	8
199	6mm Flat Washer	8
200	6 x 12mm Head Square Bolt Carriage	8
201	Push Stick	1
202	Hook	1
203	6mm Hex Nut	1
204	Wrench Frame / Holder	1
205	4 x 10mm Cross Head Screw	2
206	8-10mm Spanner / Open End Wrench	1
207	6mm Wrench	1
208	5mm Wrench	1
209	4mm Wrench	1
210	3mm Wrench	1



STEEL CITY TOOL WORKS

www.steelcitytoolworks.com

1-877-SC4-TOOL
(1-877-724-8665)

NOTES

www.steelcitytoolworks.com

Steel City Tool Works, LLC Bolingbrook, IL. USA 60440

Tech Service: 1.877.724.8665