

**EXPLODED
VIEWS**

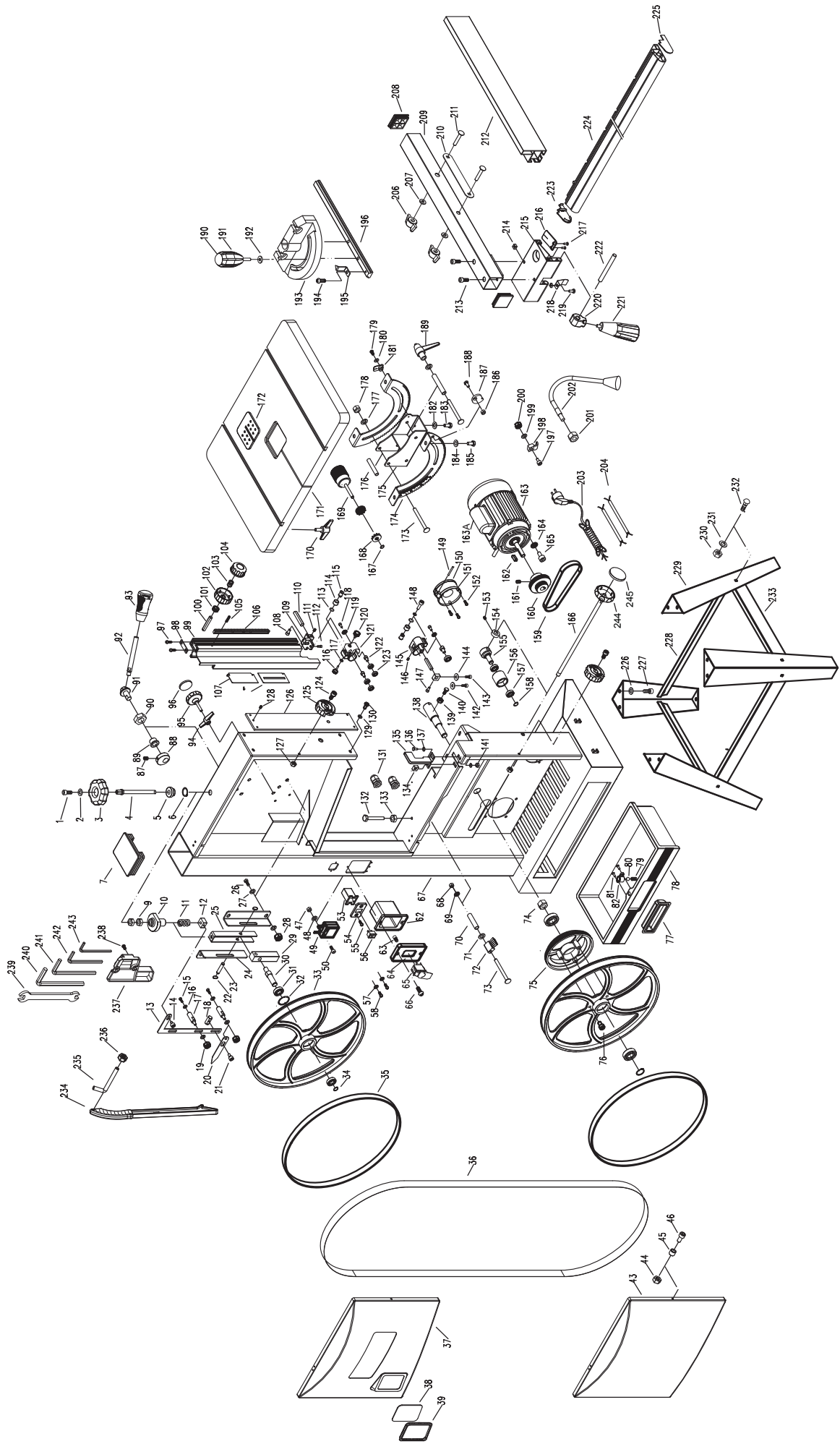
50112

SERIAL NO. _____

www.steelcitytoolworks.com

VER. 11.19.13

ASSEMBLY DIAGRAM



PARTS LIST

Part NO.	Description	QTY
1	5 x 12mm Socket Head Screw	1
2	5mm Washer	1
3	Knob	1
4	Tension Screw	1
5	Spacer	1
6	3AMI-15 Retaining Ring	1
7	Body Plug	1
9	8mm Hex Nut	2
10	Cam Coupled Loop / Retainer	1
11	Tension Spring	1
12	Tension Nut	1
13	Connecting Wrench / Bracket	1
14	Axis Bolt II / Screw	1
15	6 x 12mm Bolt	3
16	6mm Flat Washer	6
17	Stud Bolt	3
18	Fixing Block	1
19	6mm Locknut	3
20	Tensioning Pointer	1
21	Axis Bolt I / Screw	1
22	3AMI-8 Retaining Ring	2
23	Adjusting Block Arbor / Shaft	1
24	Guide Rail Plate	2
25	Pull block	1
26	8 x 16mm Bolt	4
27	8mm Flat Washer	8
28	8mm Hex Nut	4
29	Adjusting Block	1
30	Upper Wheel Shaft	1
31	Ball Bearing	4
32	3BMI-35 Retaining Ring	4
33	Wheel	2
34	3AMI-15 Retaining Ring	2
35	Tire	2
36	Blade	1
37	Upper Wheel Cover	1
38	Window	1
39	Window Seal	1
43	Lower Wheel Cover	1
44	6mm Locknut	2
45	Gasket	2
46	6 x 16mm Socket Head Screw	2

47	4mm Cap Nut	1
48	4mm Flat Washer	1
49	LED Lamp Driver	1
50	4 x 12mm Socket Head Screw	1
53	LED Lamp Switch Box	1
54	LED Lamp Switch Plate	1
55	4 x 12mm Cross Head Screw	2
56	Switch	1
57	4mm Toothed Washer	2
58	4 x 8mm Cross Head Screw	2
62	Switch Box	1
63	Screw	3
64	Switch board	1
65	Switch	1
66	4 x 12mm Cross Head Screw	2
67	Body	1
68	8mm Cap Nut	1
69	8mm Flat Washer	1
70	Brush Spacer	1
71	8mm Flat Washer	1
72	Brush	1
73	8 x 90mm sq. hd. carriage bolt	1
74	20 x 1.5mm Nut	1
75	Spindle Pulley	1
76	6 x 10mm Socket Head Screw	3
77	Drawer Handle	1
78	Drawer	1
79	Steel Ball Spring	1
80	8mm Steel Ball	1
81	2.9 X 9.5mm Cross Head Screw	2
82	Steel Ball Fixing Sleeve	1
88	Cam	1
89	Cam Axis Guide	1
90	20 x 1.5mm Nut	1
91	Cam Shaft	1
92	Cam Handle Bar	1
93	Handle Cover / Knob Black	1
94	Upper Wheel Position Fixing Handle	1
95	Upper Wheel Adjusting Handle	1

PARTS LIST

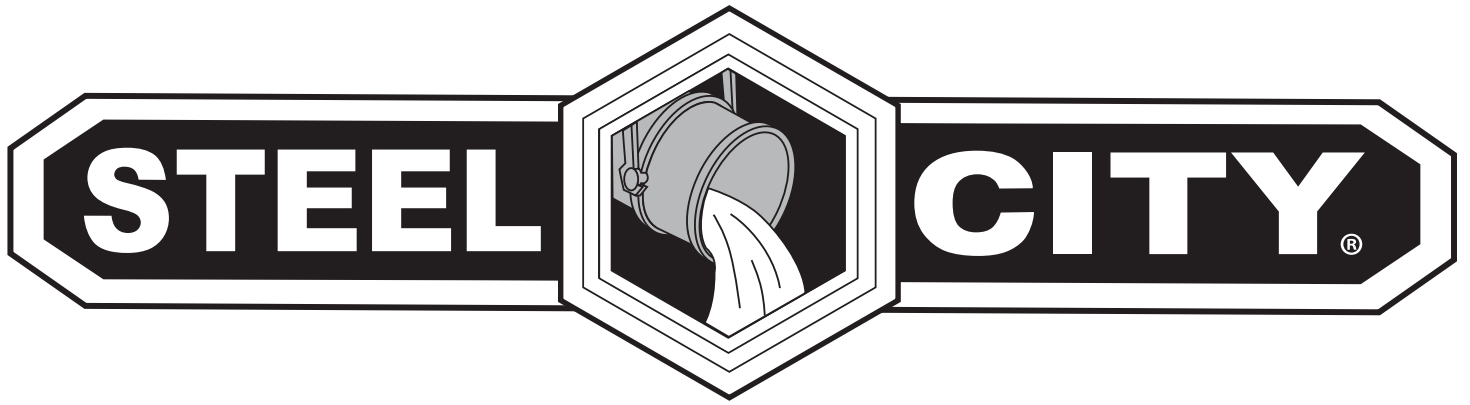
Part NO.	Description	QTY
96	Handle Cover	2
97	4.8 x 13mm Cross Head Screw	2
98	Location Limited Plate	1
99	Blade Guard Cover	1
100	Shaft	1
101	Gear	1
102	Adjusting Handle / Knob	1
103	Spring	1
104	Locking Handle	1
105	Spring Pin	2
106	Rack	1
107	Guard Plate	1
108	6 x 12mm Socket Head Screw	1
109	Connecting Block	1
110	Connecting Shaft	2
111	6 x 8mm Socket Set Screws	1
112	4.8 x 13mm Cross Head Screw	2
113	10mm Baffle Ring	2
114	Needle Bearing	2
115	Bearing Pillar II / Shaft	2
116	Knob II Left	1
117	5mm Flat Washer	1
118	6 x 16mm Socket Head Screw	2
119	6mm Flat Washer	2
120	Knob I Right	1
121	Guide Block	1
122	Bearing Pillar I / Shaft	4
123	Ball Bearing	8
124	6 x 16mm Socket Head Screw	2
125	Handle	2
126	Guide Plate	1
127	6mm Locknut	2
128	6 x 8mm Socket Head Set Screw	1
129	6mm Flat Washer	4
130	6 x 10mm Socket Head Screw / Bolt	4
131	Strain Relief	2
132	Level Locating Rod	1
133	8mm Hex Nut	1
134	Fixing Block	1
135	Lower Blade Guard Plate	1
136	6 x 12mm Screw	2
137	6mm Flat Washer	2

138	Lower Wheel Shaft	1
139	6mm Hex Nut	4
140	6 x 16mm Screw / Bolt	4
141	6mm Hex Nut	1
142	6 x 8mm Hex Screw	1
143	6 x 10mm Hex Screw	1
144	6mm Flat Washer	2
145	Guide Block	1
146	6 x 8mm Set Screw	1
147	5 x 10mm Set Screw	1
148	5 x 25mm Set Screw	1
149	3 x 22mm Pin	1
150	Dust Export Cover	1
151	Dust Export	1
152	4.2 x 13mm Cross Head Screw	3
153	6 x 8mm Socket Set Screw	1
154	Locating Ring / Lock Ring	1
155	Tension Pulley Shaft	1
156	Tension Pulley	1
157	Ball Bearing	2
158	3AMI-12 Retaining Ring	1
159	Belt	1
160	Motor Pulley	1
161	8 x 8mm Set Head Screw	1
162	Key	1
163	Motor	1
163A	Capacitor CB60 60uF 250VAC	1
164	6mm Flat Washer	4
165	6 x 12mm Socket Head Screw	4
166	Tension Handle / Rod	1
167	3AMI-18 Retaining Ring	1
168	Adjusting Gear	2
169	Adjusting Handle	1
170	Rail mounting knobs	4
171	Working Table	1
172	Insert	1
173	Square Neck Bolt / Carriage	2
174	Angle Plate / Trunnion	2
175	Rotary Seat / Trunnion Bracket	1
176	Spacer Sleeve	2
177	8mm Washer	2
178	8mm Locknut	1

PARTS LIST

Part NO.	Description	QTY
179	4 x 12mm Cross Head Screw	1
180	4mm Flat Washer	1
181	Pointer	1
182	6mm Flat Washer	4
183	6 x 10 Hex Screw	4
184	8mm Flat Washer	4
185	8 x 10mm Socket Head Screw	4
186	6mm Hex Nut	1
187	Spacing Shim	1
188	6 x 10 Socket Screw	1
189	8mm Handle	1
190	Knob Cover	1
191	Knob	1
192	Plastic Washer	1
193	Miter Gauge Body	1
194	4 x 8mm Cross Head Screw	1
195	Pointer	1
196	Slide Bar	1
197	5 x 12mm Socket Head Screw	1
198	Cord Grip / Retainer	1
199	5mm Flat Washer	1
200	5mm Cap Nut	1
201	10mm Hex Nut	2
202	LED Lamp	1
203	Line Cord / Power	1
204	Line	2
205	Insulator Sleeve	2
207	6mm Flat Washer	2
208	Plug / End Cap	2
209	Running Rule Square Pipe / Fence	1
210	Wafer / Spacers	1
211	6 x 50 Head Carriage Bolt	2
212	Running Rule / Rail	1
213	5 x 10mm Socket Head Screw	2
214	5mm Square Nut	3
215	Running Rule Seat / Fence Body	1
216	Pointer / Cursor	1
217	2.9 x 9.5mm Cross Head Screw	2
218	Spring Leaf / Lock Bracket	1
219	5 x 8mm Cross Head Screw	1
220	Lock Block	1

221	Locking Handle	1
222	Shaft	1
223	Plug II / Left Rail Cap	1
224	Running Rule Guide Rail / Scale	1
225	Plug I / Right Cap Rail	1
226	8mm Flat Washer	8
227	8 x 10mm Socket Head Screw	8
228	Support Plate / Long Brace	2
229	Stand / Legs	4
230	6mm Hex Nut	8
231	6mm Flat Washer	8
232	6 x 12mm Head Square Bolt	8
233	Support Plate / Short Brace	2
234	Push Stick	1
235	Hook	1
236	6mm Hex Nut	1
237	Wrench Frame / Holder	1
238	4 x 10mm Cross Head Screw	2
239	8-10mm Spanner / Wrench	1
240	6mm Wrench	1
241	5mm Wrench	1
242	4mm Wrench	1
243	3mm Wrench	1
244	Tension Knob	1
245	Tension Knob Cap	1



STEEL CITY TOOL WORKS

www.steelcitytoolworks.com

1-877-SC4-TOOL
(1-877-724-8665)

NOTES

www.steelcitytoolworks.com

Steel City Tool Works, LLC Bolingbrook, IL. USA 60440

Tech Service: 1.877.724.8665